



Reflecting on the future



INSURANCE DASHBOARD FRAMEWORK

Background

Component

Key Benefits

About Ibexi

IBEXI SOLUTIONS PVT. LTD.

Website: - www.ibexi.com

Email: - info@ibexi.com

Tel: +91 22 42045763



Background

Today, the insurance business is driven by targets. Managers both top management and operational, have to keep track of their key result areas. Prompt decisions and most importantly correct decisions make all the difference. Organizations are increasingly focusing on Key Performance Indicators (KPIs) to track the different aspects of their key result areas. But, incorrectly devised KPIs give a wrong picture of the business. Designing KPIs for a business require thorough understanding of the business itself.

If a picture's a thousand words, what's the value of a well-designed dashboard? That's the question facing all report authors, as a growing number of frontline managers turn to dashboards to keep core processes running smoothly. The challenge is to use dashboards effectively to keep track of KPIs for different roles in an insurance company.



Insurance Dashboard

Key Benefits

- Attractive Visual Experience
- Customizable to different management level
- Ability to drill into details
- Cost-Effective for Enterprise deployment
- Trending visibility
- Constant Dataflow

Ibexi's dashboard solution provides role based action oriented information to executives across the enterprise. The solution is the result of Ibexi's expertise in the insurance domain and Business Intelligence. The solution covers multiple departments in an insurance company namely, sales, operations, underwriting etc. The solution presents information in the form of KPIs and comes with pre-built standard KPI's for Life and General Insurance companies. These can be customized or extended to include the customers distinct KPI. Ibexi's dashboard tool adds an attractive visual experience to the information provided. It enables extraction and consolidation of data from relevant sources to build the KPIs.

Components

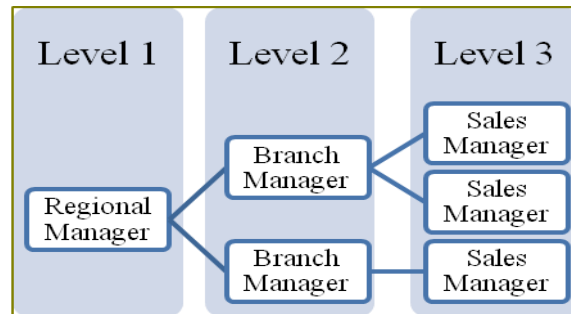
KPI Definition

- Global KPIs set identified for each department in an insurance company
- Identify Key Result Areas (KRA) for each role within
 - Sales
 - Operations
 - Claims etc.

KPI Data Preparation

As a part of the KPI data preparation process, Ibexi offers the following:

- Identification of relevant data sources
- Identification of existing data marts / MIS databases / Data Warehouse for leveraging opportunities.
- Analysis of implemented business logic
- Build new data marts/ KPI database

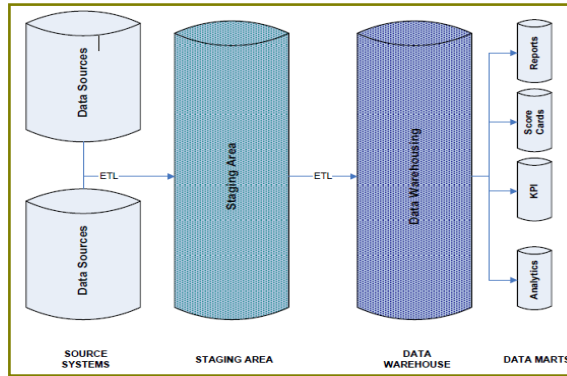




KPI Presentation

Ibexi has developed a web based solution for creating dashboards for the identified KPIs. The dashboard solution has the following features:

- Security/ Authentication enabled
- Role based logins and displays for KPIs
- Support for multiple chart types, like
 - Line
 - Bar
 - Stack Bar
 - Gauge
 - Cross Tab
 - Pie and many more
 - Traffic Light and many more
- Customizable ranges for KPI display
- Support for multiple databases
- Automated summary creation
- Support drill down paths from higher dimension to lower and from summary charts to detailed list reports
- Exception flagging





About IBEXI

IBEXI Solutions specializes in providing business and technology solutions across the insurance value chain, for the entire community- insurers, re-insurers, banks, agents, brokers, distributors and service providers – in all areas of insurance. IBEXI brings to the insurance industry a unique combination of business knowledge, technology and process skills, and insurance-specific products.

Other IBEXI offerings for insurance industry:

PRODUCTS	<p>Core administration System</p> <ul style="list-style-type: none"> •INGENIUM® for Life Insurance •IDIT™ for Non-Life Insurance •WebXL™ for Reinsurance •innovas™ for Health •iGas™ for Group Life <p>Additional applications and framework</p> <ul style="list-style-type: none"> •Insurance Portal Framework •Analyst - Need Analysis System •Canvass – Benefit Illustration Solution •Receipting and Collections System •PAS – Proposal Administration System for Brokers •Insbank- Bancassurance package •Channel Incentive Management •Insurance dashboard •BI Business Views for common applications 	SERVICES	<p>Strategic IT consulting</p> <ul style="list-style-type: none"> •Creating IT roadmaps and vision •Software Selection •Business process design and re-engineering <p>Implementation of enterprise-wide system</p> <p>Application development and maintenance</p> <p>Business Intelligence & Data warehousing</p> <ul style="list-style-type: none"> •Tool Evaluation •Report Rationalization •Data Model Design •Reporting and Dashboards •Data Mining <p>Testing</p> <ul style="list-style-type: none"> •Core application testing •Specialized Testing <p>Insurance Training</p>
-----------------	---	-----------------	--